

**SAMPLE**

**Official Ballot**  
City of Fort Walton Beach  
Municipal Election  
Okaloosa County, Florida  
March 12, 2019

**SAMPLE**

- **Instructions:** To vote, fill in the oval completely (●) next to your choice. Use only the marking pen provided or a blue or black pen.
- **If you make a mistake, ask for a new ballot. Do not cross out, or your vote may not count.**

**City Council  
(Vote for up to Four)**

- Ryan Hartman
- Mike Holmes
- Nathan Kelley
- Kirby Locklear
- M. G. Moran

**MUESTRA**

**Boleta Oficial**  
Ciudad de Fort Walton Beach  
Elección Municipal  
Condado de Okaloosa, Florida  
12 de marzo de 2019

**MUESTRA**

- **Instrucciones:** Para votar, rellene completamente el óvalo (●) próximo a su selección. Use solo el rotulador provisto o un rotulador azul o negro.
- **Si comete un error, solicite una nueva boleta. No borre o realice otras marcas, o su voto puede no ser computado.**

**Consejo Municipal  
(Vota por hasta cuatro)**

- Ryan Hartman
- Mike Holmes
- Nathan Kelley
- Kirby Locklear
- M. G. Moran

**This is your Sample Ballot for the March 12, 2019, City of Fort Walton Beach Municipal Election.**

- Only City of Fort Walton Beach residents registered to vote on or before February 11, 2019, are eligible to vote in this election.
- If you have moved since you last voted, please check with the Supervisor of Elections Office to verify if you are still eligible for this city election.
- **Move your polling place to your living room.** Request your ballot by contacting the Supervisor of Elections office via telephone, email, mail, in person or by visiting our website. Vote-by-mail ballots must be returned to the Supervisor of Elections Office by 7pm on Election Day in order to be counted.
- **Early voting** will be held Monday, March 4 – Friday, March 8, at the Supervisor of Elections Offices in Crestview and Shalimar. Hours of operation are 8:30 am – 4:30 pm.
- Your polling places (see reverse) for registered city residents will be open from 7am to 7pm on March 12, 2019, Election Day.

**Esta es su muestra de la boleta electoral para el 12 de marzo de 2019, elección municipal del la ciudad de Fort Walton Beach.**

- Solamente residentes de la ciudad de Fort Walton Beach registrados para votar en o antes del 11 de febrero de 2019, son elegibles para votar en esta elección.
- Si se ha mudado desde la última vez que votó, verifique con la Oficina del Supervisor de Elecciones para verificar si todavía es elegible para esta elección de la ciudad.
- **Mueva su lugar de votación a su habitación.** Solicite su boleta contactando a la Oficina del Supervisor de Elecciones por teléfono, correo electrónico, correo, en persona o visitando nuestro sitio web [www.GoVote-Okaloosa.com](http://www.GoVote-Okaloosa.com). Las boletas de voto por correo deben devolverse a la Oficina del Supervisor de Elecciones a más tardar a las 7 pm el Día de las Elecciones para poder ser contadas.
- **La votación anticipada** se llevará a cabo del lunes, 4 de marzo al viernes, 8 de marzo en la Oficina del Supervisor de Elecciones en Crestview y Shalimar entre las 8:30 am y las 4:30 pm.
- Los lugares de votación (ver el reverso) para residentes registrados de la ciudad estarán abiertos de 7 am a 7 pm el 12 de marzo de 2019.



Paul Lux, Okaloosa County Supervisor of Elections

**Sample Ballot Enclosed**  
**Incluidos en la boleta de muestra**

**City of Fort Walton Beach Municipal Election**  
**Elección municipal del la ciudad de Fort Walton Beach**

**City of Fort Walton Beach Polling Places Open on Tuesday, March 12, 2019, from 7am to 7pm:**

**Los lugares de votación de la Ciudad de Fort Walton Beach abren el martes 12 de marzo de 2019, de 7 am a 7 pm:**

- **Pct. 19:** (East FWB) Beulah First Baptist Church, 109 McGriff St, Ft. Walton Beach
- **Pct. 22:** (S. Central FWB) Ft. Walton Beach Recreation Center, 132 Jet Drive NW, Ft. Walton Beach
- **Pct. 24:** (West FWB) Salvation Army Chapel, 425 Mary Esther Cut Off, Ft. Walton Beach
- **Pct. 28:** (Garniers) Cinco Bayou Town Hall, 10 Yacht Club Dr, Ft. Walton Beach
- **Pct. 29:** (Golf Course) Beachside Community Church, 200 Racetrack Rd NW, Ft. Walton Beach
- **Pct. 32:** (Ferry Park) The Church of Christ, 232 Hollywood Blvd SE, Ft. Walton Beach
- **Pct. 41:** (N. Central FWB) Ft. Walton Beach Recreation Center, 132 Jet Drive NW, Ft. Walton Beach
- **Pct. 42:** (New Heights) Destiny Worship Center, 233 Hill Ave NW, Ft. Walton Beach
- **Pct. 48:** (Westwood) The Meridian at Westwood, 1001 Mar Walt Dr NW, Ft. Walton Beach

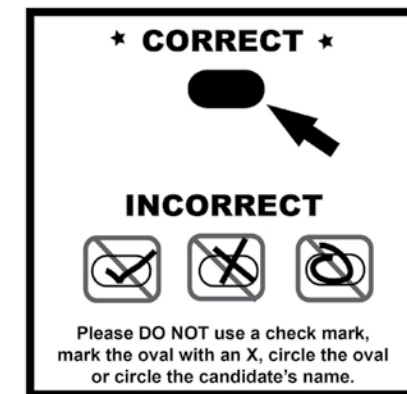
**Your Vote Counts!**  
**¡Su voto cuenta!**

**South Office**  
**Oficina al sur**  
1250 Eglin Pkwy, Ste 103  
Shalimar, FL 32579  
Phone: 850.651.7272

**www.GoVote-Okaloosa.com**  
For more information, email:  
Para obtener más información, envíe un correo electrónico a:  
plux@myokaloosa.com

**Election Headquarters**  
**Sede de Elecciones**  
302 N Wilson St., Ste 102  
Crestview, FL 32536  
Phone: 850.689.5600  
Fax: 850.689.5644

## HOW TO MARK A PAPER BALLOT (OPTICAL SCAN)



Please follow instructions located at the top of your ballot to avoid any issues that may occur with an incorrectly marked ballot. Fill in the oval as best as you can while avoiding stray markings outside of the oval or within the margins of the ballot. Above is an example of a correct marking of the oval, completely filled in with a blue or black ink pen. If you make a mistake, ask our Patriot Poll Workers for assistance.



### NEED ASSISTANCE AT THE POLLS?

Need assistance to vote? You can bring a friend or family member, but our Patriot Poll Workers are well trained and qualified to assist you. All polling places are accessible to voters with special needs. AutoMARK ballot marking devices are available for voters with disabilities to vote secretly and independently.

### ADDRESS CHANGE

If you have moved recently and have a new address other than the one in the poll register, you will be asked to see the Clerk to determine if you are in the correct precinct. It is a third-degree felony to vote in a precinct other than which you live. If you would like to verify your address with our office before Election Day, just call or email us, or use our online Voter Lookup Tool.

### IDENTIFICATION

Voter Information cards are not a valid form of identification when voting. Be sure to bring a current and valid photo ID for precinct and early voting. If the photo ID does not contain your signature, an additional ID that includes your signature shall be required. If you do not bring any ID, you will be allowed to vote; however, you will be asked to vote a provisional ballot. Approved forms of photo ID are:

- Florida Driver's License
- Florida ID Card issued by the Department of Highway Safety & Motor Vehicles
- Military ID
- Current U.S. Passport
- Debit/Credit Cards
- Student ID
- Retirement Center ID
- Neighborhood Association ID
- Public Assistance ID
- FL Concealed Carry License
- Veteran Health ID Card
- Federal, State, County, or Local Government Employee ID Card

### INTERESTED IN BECOMING A POLL WORKER?

- Applications are available at the Supervisor of Elections Office or online at **www.GoVote-Okaloosa.com**.
- Selection is based on qualifications to fulfill job description.
- Appointed after mandatory training classes, no less than six hours per election year.
- Paid positions, with requirements



### ¿Necesitas ayuda en español?

Si necesita ayuda en español, habrán recursos disponibles en su centro de votación y en nuestro sitio web: **GoVote-Okaloosa.com**. Ahí encontraras información sobre el proceso electoral en el condado Okaloosa, instrucciones como Votar por Correo, el boleta traducido al español, y como registrarse para votar o actualizar su información.